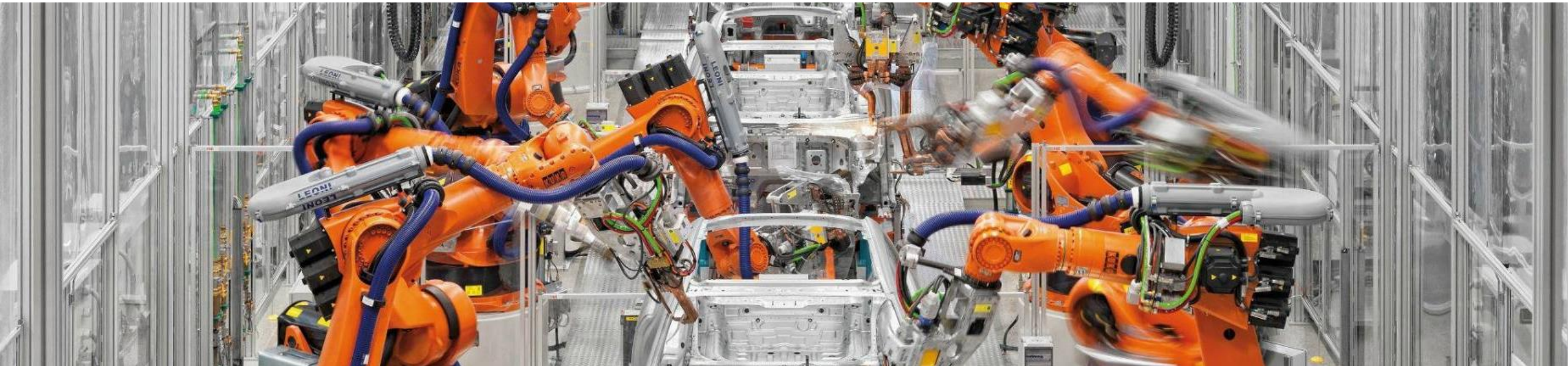




Follow Automation Group

Industrial installation & service



Section 1

Introduction

Follow Automation Group is a global company powered by people delivering optimal automation solutions for the automotive and heavy industry sectors. The company builds and integrates intelligent production systems including:

- **Welding and Joining Systems**
- **Engineering and Montage**
- **Automation and Assembly**
- **Final Assembly and Conveyor Systems**
- **Molds and Tooling Technology**
- **Heavy Industry Components**
- **Custom Fabrication**
- **Electronic Connection Assembly and Management**

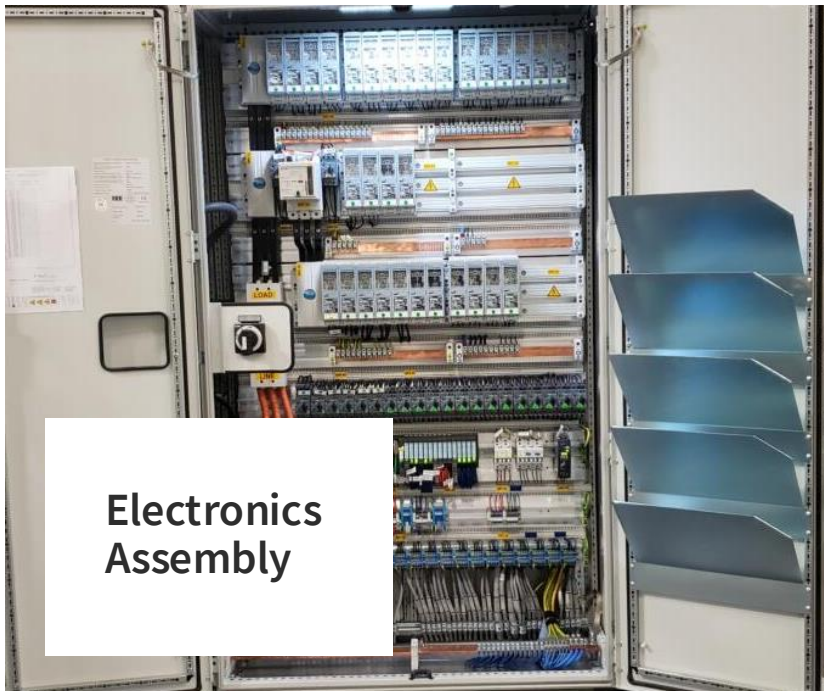
Machinery



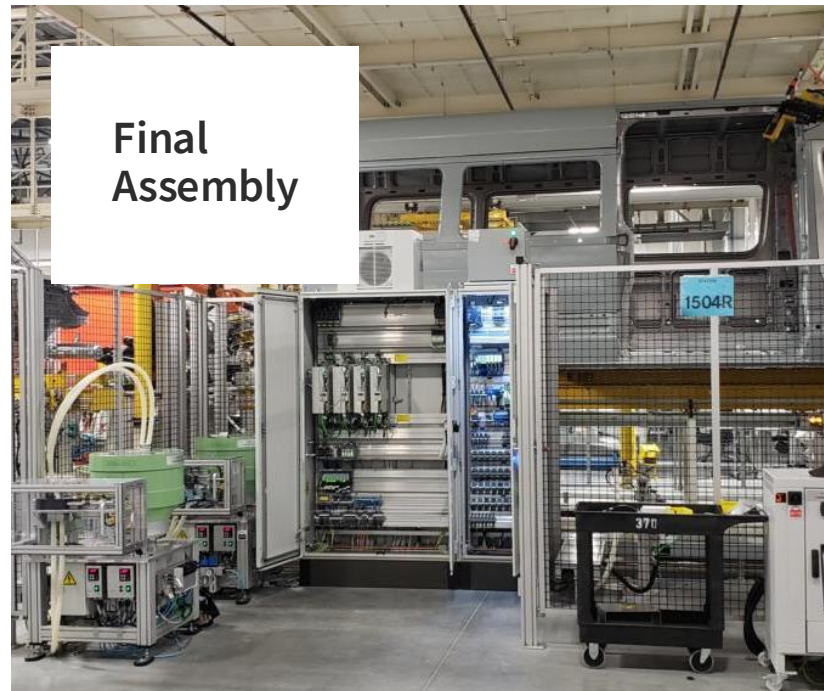
Safety



**Electronics
Assembly**



**Final
Assembly**



**Conveyor
Systems**



Section 2

Our Projects

At this point Follow Automation Group has various projects in three different countries

Two in USA

Ladson, South Carolina
Chattanooga, Tennessee

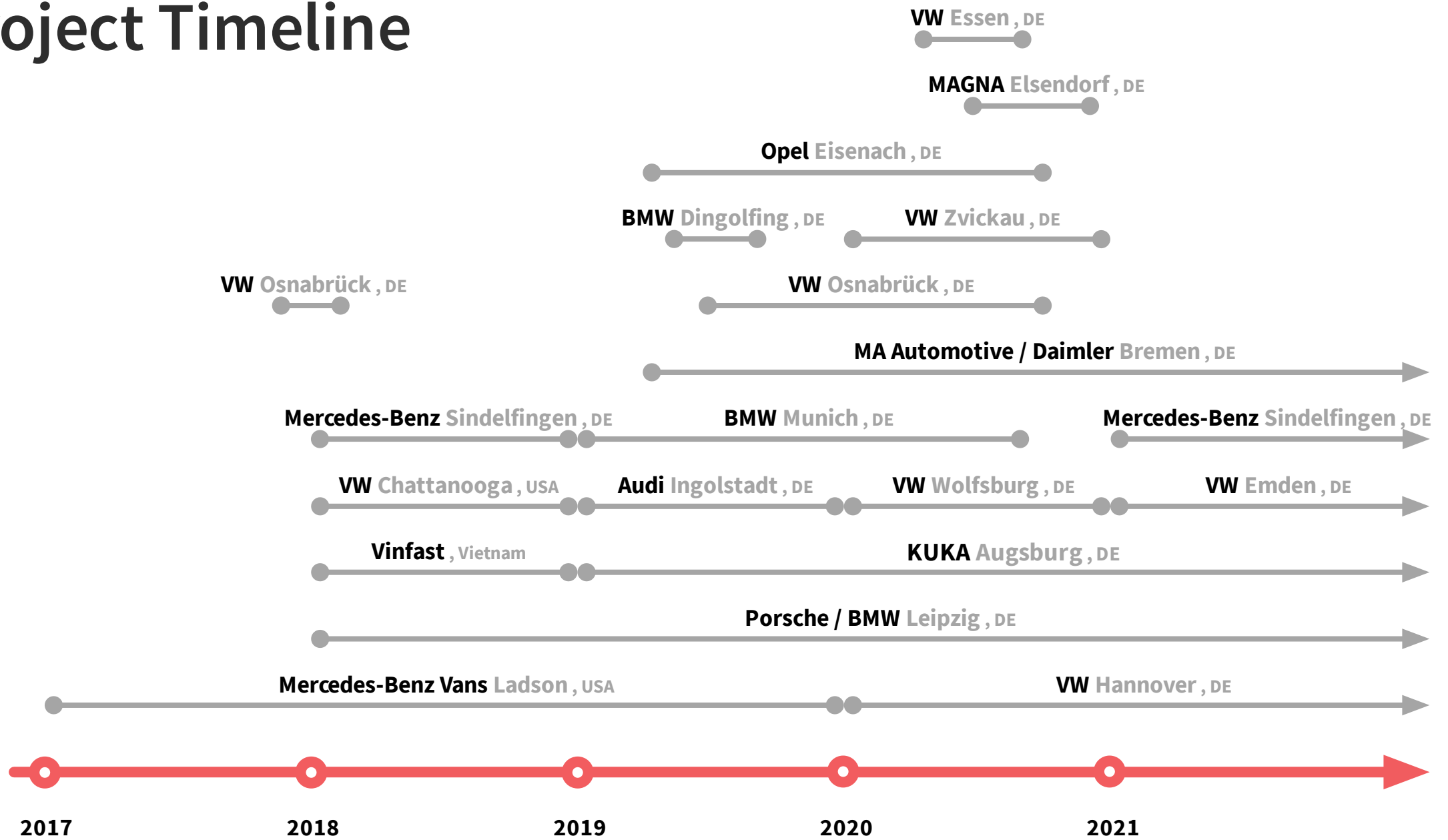
Sixteen in Germany

Sindelfingen	Wolfsburg
Osnabrück	Dingolfing
Eisenach	Augsburg
2 in Bremen	Elsendorf
Ingolstadt	Essen
Munich	Emden
Leipzig	Hannover
Zwickau	

One in Vietnam

Hanoi

Project Timeline



Mercedes-Benz Vans, Ladson, South Carolina, USA



Our proud team of supervisors after completing robot and safe guard assembly in one of the locations on this huge building site.



Mercedes-Benz Vans, LLC (“MBV”) is a plant in Ladson, South Carolina that produces Sprinter vans for the U.S. and Canadian market under the brands Mercedes-Benz and Freightliner. The midsize Mercedes-Benz Metris vans are also reassembled at this location.



While everyone is having holiday days off, we work extra to make sure we build long term relationships that are mutually beneficial to all parties.

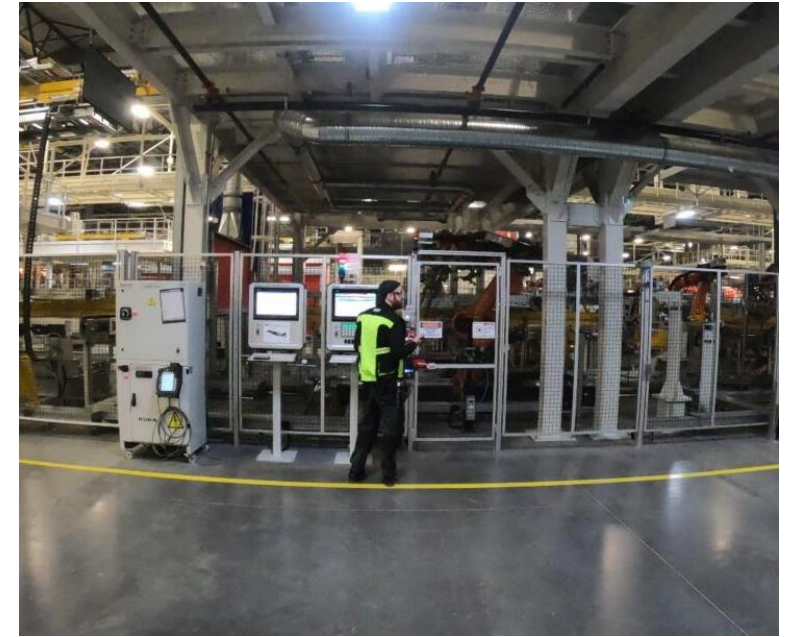
Volkswagen, Chattanooga, Tennessee, USA



Our engineers are accepting any task no matter how dirty work will be, as we provide best service at all the points.



The Volkswagen Chattanooga Assembly Plant (or Chattanooga Operations LLC) is an automobile assembly plant in Chattanooga, Tennessee, that began production in April 2011. The plant has a projected annual production of 150,000 cars beginning with a version of the 2012 Volkswagen Passat NMS, tailored to the US market.



Safety is a major priority in our business so our supervisors make sure everything is working and environment is safe.

Mercedes-Benz, Sindelfingen, Germany



Sometimes our job looks like a challenge but with our skilled engineers nothing is impossible no matter what size is machinery.



Sindelfingen manufactures the S-Class, the flagship vehicle from Mercedes-Benz. The latest S-Class model went into series production in 2017. In the future, the Mercedes-Benz plant in Sindelfingen will also produce electric vehicles of the product and technology brand EQ.



We actually enjoy what we do and trying our best so it's win-win for both sides. Our employees and a company.

Volkswagen, Osnabruck, Germany



We proud with our work with such companies as Mercedes, Vinfast and Volkswagen and always looking for a new projects.



Osnabruck has been a proud car city for over 100 years. Building on this tradition, Volkswagen Osnabruck GmbH was founded in December 2009. The factory site covers an area of 426,000 m² and employs more than 2,300 staff, who form the entire automotive process chain from the first idea through to series production.



Our team of engineers after completing electric connection assembly as a part of our task on Osnabruck's plant.

Opel, Eisenach, Germany



Opel Eisenach GmbH (formerly Opel AWE Planungs GmbH) is a German manufacturing company based at Eisenach in Thuringia, Germany and a subsidiary of Opel. It currently produces the Opel Corsa and Opel Adam.



Since 1993, Opel Eisenach has been producing the Opel Corsa. Between 1990 and 2009 the plant produced 2.5 million vehicles. In 2010, Opel decided to build its new city car at the Thuringian production plant, and the Opel Adam duly appeared in January 2013.



Our team started working here in 2019 and we are looking forward for long relationship with the company and management team.

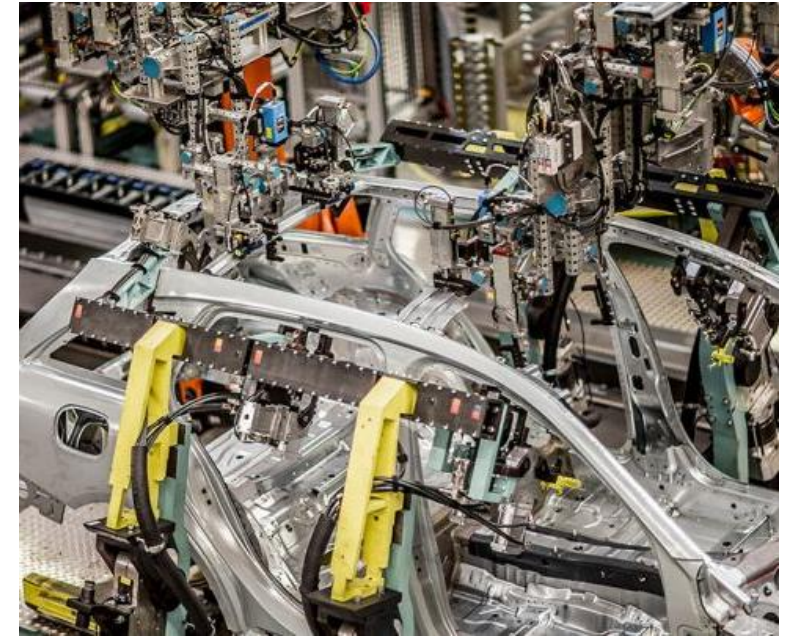
Daimler, Bremen, Germany



Tradition meets future: Mercedes-Benz cars have been rolling off the assembly lines at the Bremen plant for the last 40 years. Starting off with the 5123 model, the plant has become a success story for northern Germany. With around 12,500 employees, the Mercedes-Benz Bremen plant is the largest private employer in the region.

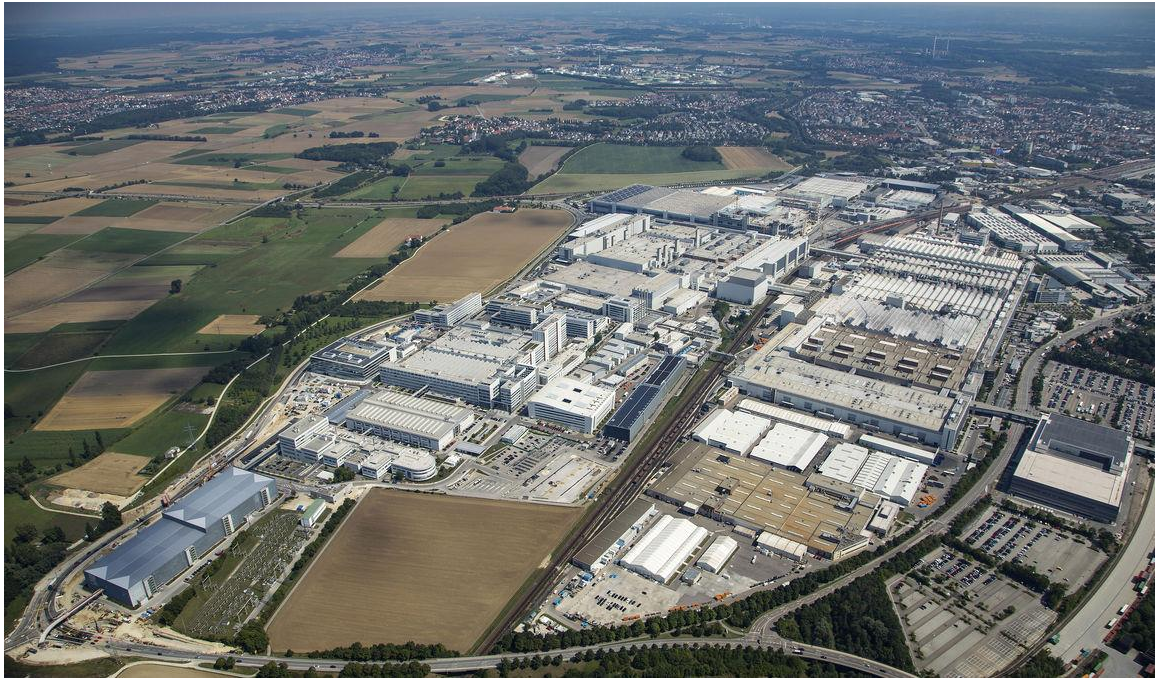


Ten models are currently being produced at the location: the C-Class sedan, wagon, coupe, and convertible; the E-Class coupe and convertible; the GLC SUV; the GLC coupe; and the SLC and SL roadsters. The Bremen plant is the lead plant steering the worldwide production of the C-Class and the GLC.

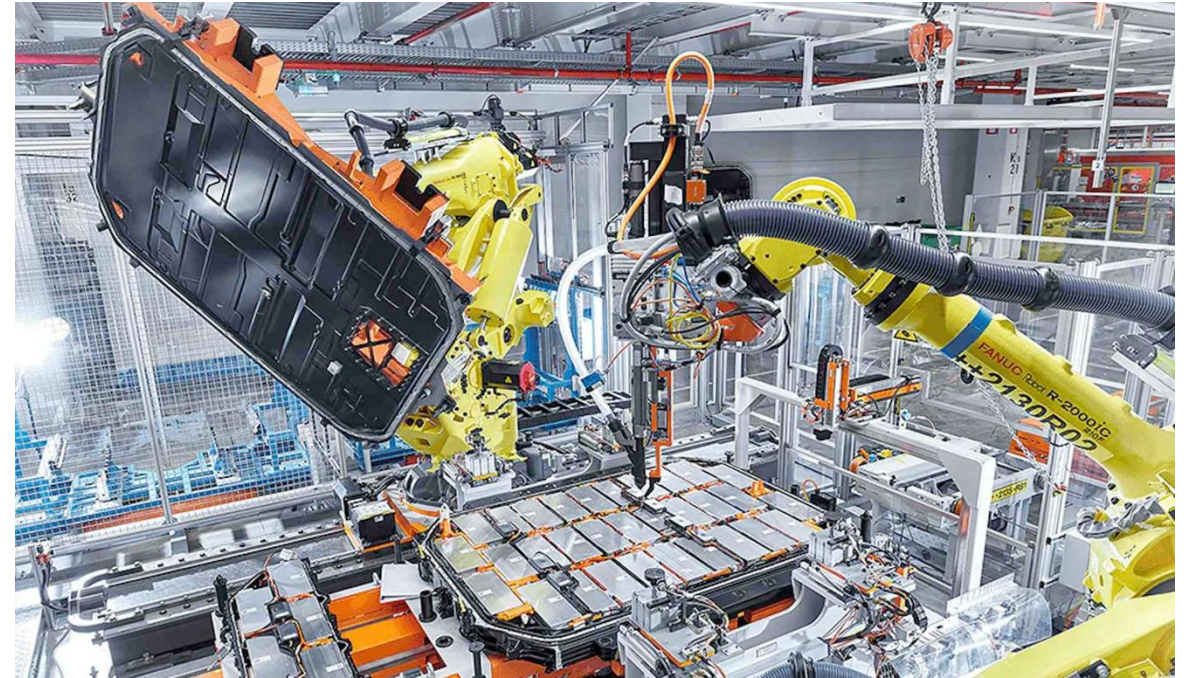


Building and production never stops and we have our people working 6 days a week to make sure everything is made to perfection.

Audi, Ingolstadt, Germany



Audi has been building cars at the Ingolstadt site for 70 years. The heart of the Audi Group beats in this Bavarian city on the Danube: Ingolstadt is where AUDI AG has its headquarters and operates the Audi Group's largest production site. From initial idea to finished automobile, the entire production process for the models Audi Q2, Audi A3, Audi A4 and Audi A5 along with their derivative versions takes place at the Ingolstadt plant.



We build and set up robots and lines, so everything works like a clock 24/7. Our skilled engineers and management of Audi team makes it win-win situation for both of the sides.

BMW, Munich, Germany



The BMW Group plant Munich is the parent BMW Group plant. It combines engineering excellence and innovative power with the passion of its approximately 7,800 employees from over 50 nations. The BMW Group Munich plant produces cars and engines since 1922.



It's great to be a part of revolutionary times when BMW is producing electric cars. Our task is to give all support we can at this time.



In the BMW Group Munich plant produce models of the BMW 3 Series and BMW 4 Series. The BMW 3 Series Touring, BMW 4 Series Coupe and M4 Coupe are exclusively manufactured in Munich and exported from there into the world. With the start of production of the BMW M4 Coupe in February 2014 the M production returned back to this location after 28 years.

VinFast Trading and Production LLC, Hanoi, Vietnam



VinFast Trading and Production LLC manufactures vehicles. The company was founded in 2017 and is headquartered in Hanoi, Vietnam. VinFast Trading and Production LLC operates as a subsidiary of Vingroup Joint Stock Company.



As company makes completely new car designs, additional information can't be provided because of non-disclosure agreement.

Volkswagen, Zwickau, Germany



The Volkswagen brand is moving forward with its electric offensive and gradually creating the production capacity needed for building more than 1 million electric cars per year throughout the world from 2025. The Group's largest and highest-performance electric car plant is currently being created in Zwickau.



In future, up to 330,000 electric models per year are to roll off the production line there – more than at any other plant of the Volkswagen Group.



We are constantly upgrading our expertise to be in step with time. Electric vehicle market is rapidly growing, and we are among the first ones to participate in installing these production lines.

BMW, Leipzig, Germany



The BMW Leipzig Plant is one of the most modern and sustainable car plants in the world. BMW cars for customers all over the world are produced here since 2005. More than 960 vehicles per day roll off the production lines.



Up to 860 cars of the BMW 1 and 2 Series are manufactured in the classic production every day. In addition, two trendsetting vehicles with alternative drive systems and innovative light weight carbon bodies are produced.



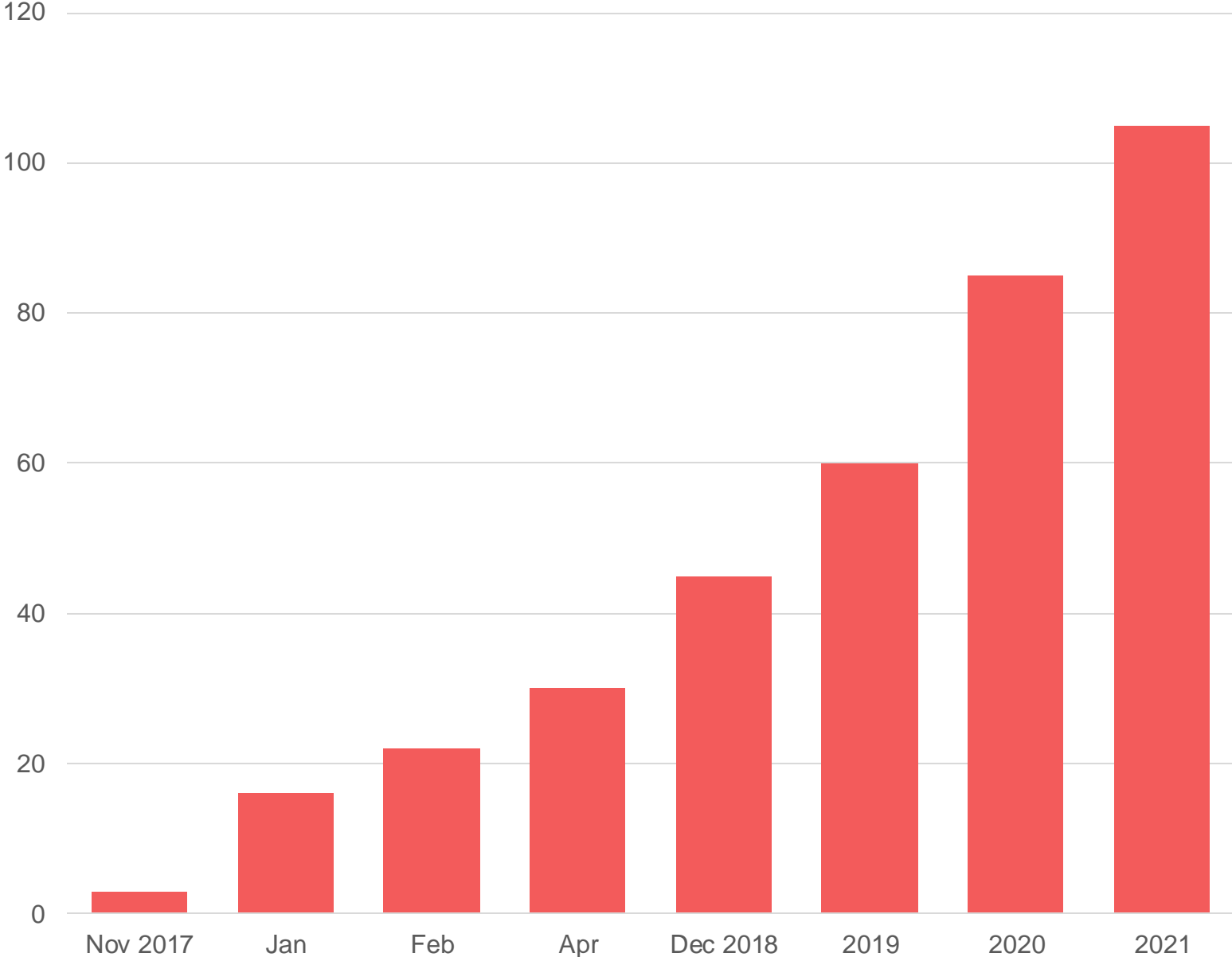
Green energy for the production of these cars is provided by four purpose-built wind turbines on site.

Section 3

Our Team

Employee Increase

Our people in short terms have got management positions, such as line leaders and supervisors



Our Long-term Goals

- **Company growth**

Getting into new work aspects such as steel construction and main construction

- **Maintain high level service and standards at all points**

Keep customer service at our best

- **Meet the workforce needs of industry by preparing workers with the skills employers need**

Get our workers training in all areas

- **To hire additional experienced professionals that can join our existing talent pool and continue the steady growth of the business**

Get more professionals into the company

- **Project growth around the world**

Gain new partnerships

- **Maintain safety at 100% and zero accidents**

Safety first



Contact Us

SIA "Follow Automation Group"

Druvienas 11/16

Riga, Latvia

LV-1079



+371 28127004



info@followautomationgroup.com



<https://followautomationgroup.com>