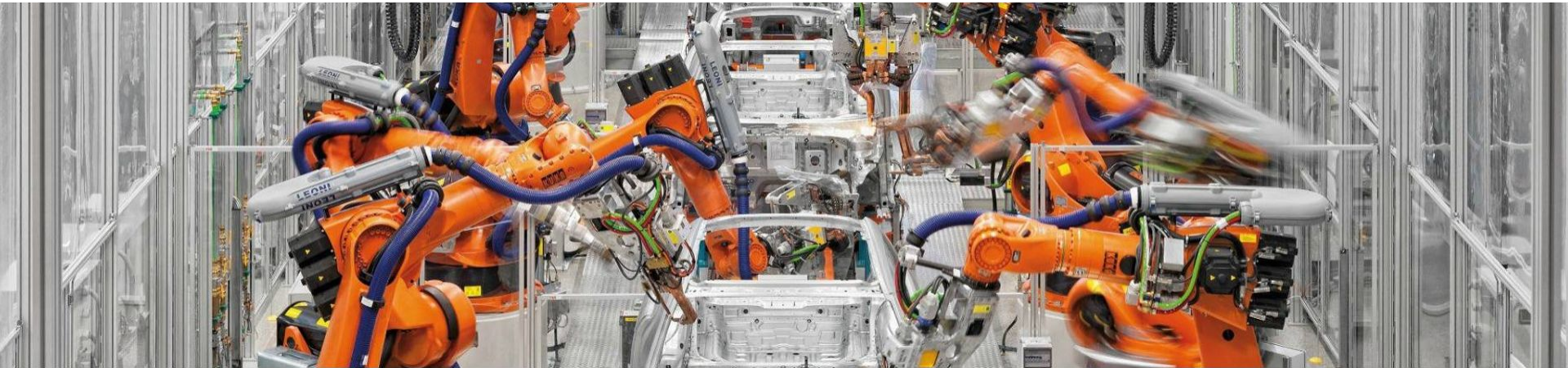


Follow Automation

Industrial installation & service Group



Overview

Follow Automation Group is a top-notch partner in providing optimal automation solutions tailored for the automotive and heavy industry sectors. Our commitment to innovation and excellence drives us to deliver intelligent production systems that enhance efficiency and productivity.

Company Vision

Powered by People: Our workforce is the backbone of our success, enabling us to meet the diverse needs of our clients. **Global Reach:** With operations in multiple countries, we are positioned to serve clients worldwide.

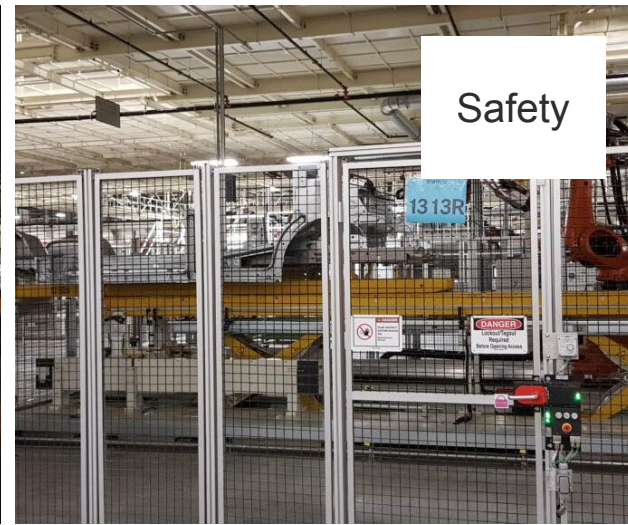
Our Skills

- Welding and Joining Systems
- Molds and Tooling Technology
- Engineering and Montage
- Heavy Industry Components
- Automation and Assembly
- Custom Fabrication
- Electronic Connection Assembly and Management
- Final Assembly and Conveyor Systems

Machinery



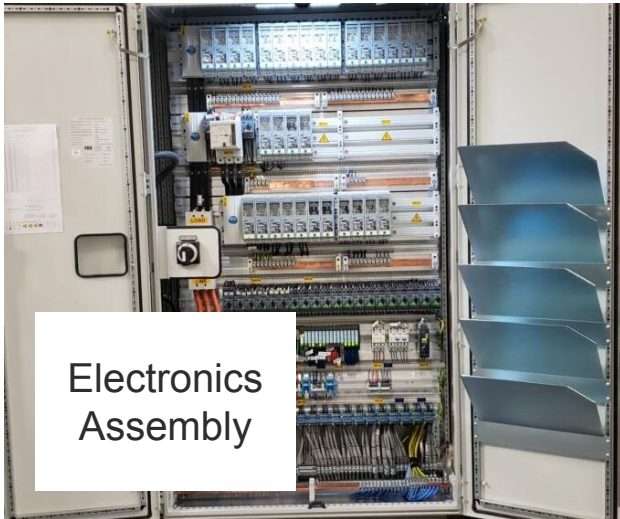
Safety



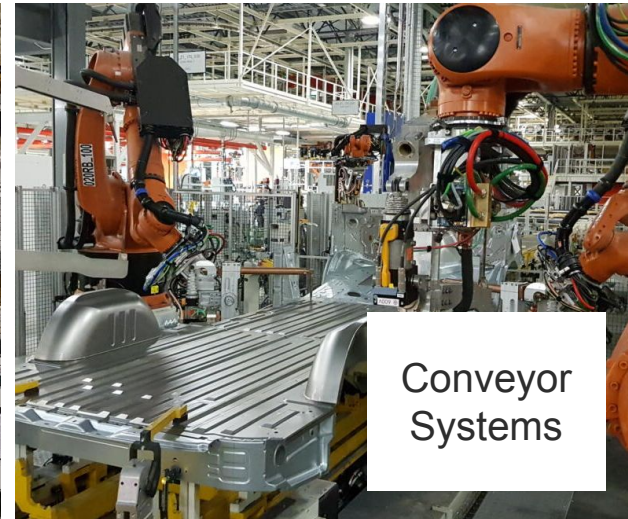
Final Assembly



Electronics Assembly



Conveyor Systems

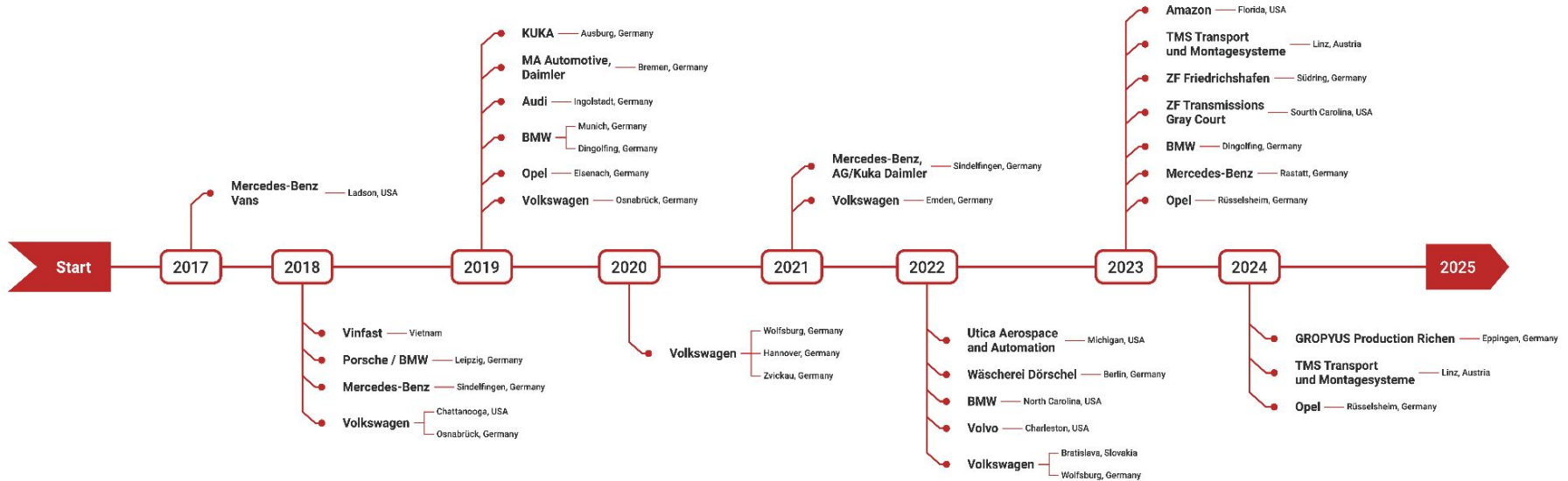


International

Currently we are implementing industrial automation solutions in 3 countries:

- Germany
- USA
- Vietnam

Timeline



- Zoom in for details



Some of our projects

Mercedes-Benz Vans, Ladson, South Carolina, USA



Our proud team of supervisors after completing robot and safe guard assembly in one of the locations on this huge building site.



Mercedes-Benz Vans, LLC (“MBV”) is a plant in Ladson, South Carolina that produces Sprinter vans for the U.S. and Canadian market under the brands Mercedes-Benz and Freightliner. The midsize Mercedes-Benz Metris vans are also reassembled at this location.



While everyone is having holiday days off, we work extra to make sure we build long term relationships that are mutually beneficial to all parties.

Mercedes-Benz, Sindelfingen, Germany



Sometimes our job looks like a challenge but with our skilled engineers nothing is impossible no matter what size is machinery.



Sindelfingen manufactures the S-Class, the flagship vehicle from Mercedes-Benz. The latest S-Class model went into series production in 2017. In the future, the Mercedes-Benz plant in Sindelfingen will also produce electric vehicles of the product and technology brand EQ.



We actually enjoy what we do and trying our best so it's win-win for both sides. Our employees and a company.

Volkswagen, Osnabruck, Germany



We proud with our work with such companies as Mercedes, Vinfast and Volkswagen and always looking for a new projects.

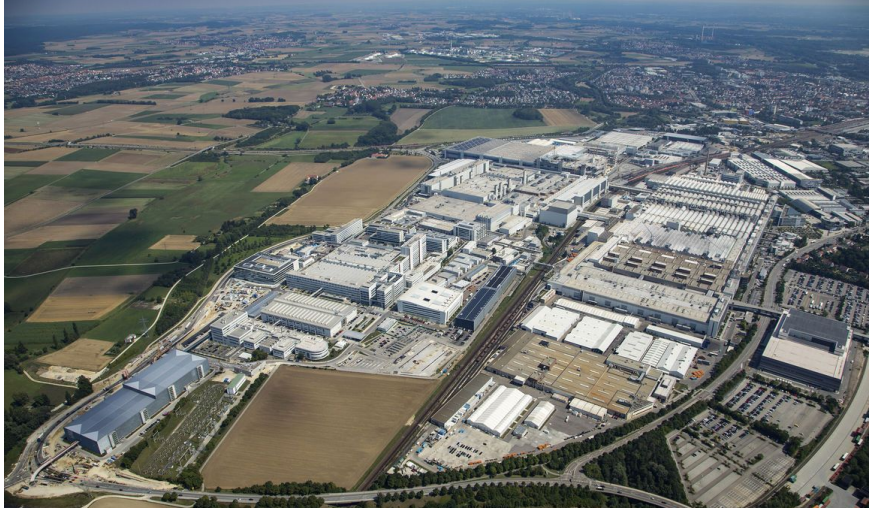


Osnabruck has been a proud car city for over 100 years. Building on this tradition, Volkswagen Osnabruck GmbH was founded in December 2009. The factory site covers an area of 426,000 m2 and employs more than 2,300 staff, who form the entire automotive process chain from the first idea through to series production.

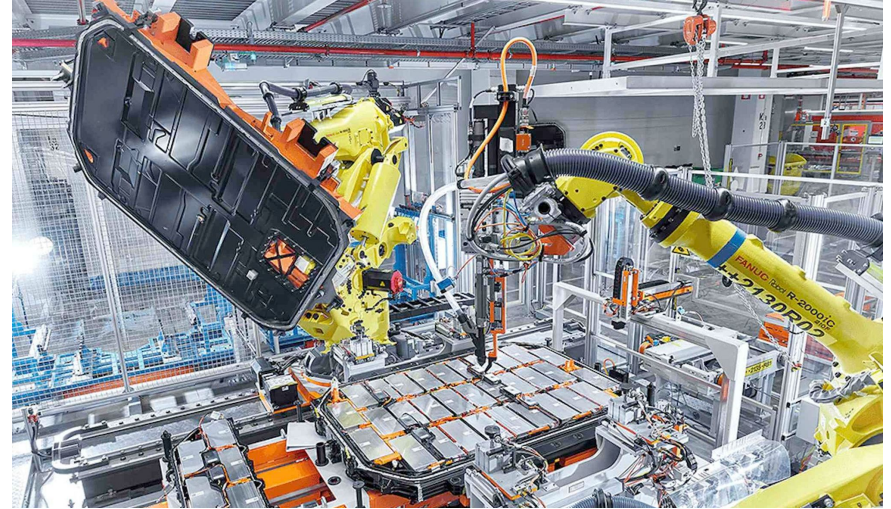


Our team of engineers after completing electric connection assembly as a part of our task on Osnabruck's plant.

Audi, Ingolstadt, Germany



Audi has been building cars at the Ingolstadt site for 70 years. The heart of the Audi Group beats in this Bavarian city on the Danube: Ingolstadt is where AUDI AG has its headquarters and operates the Audi Group's largest production site. From initial idea to finished automobile, the entire production process for the models Audi Q2, Audi A3, Audi A4 and Audi A5 along with their derivative versions takes place at the Ingolstadt plant.



We build and set up robots and lines, so everything works like a clock 24/7. Our skilled engineers and management of Audi team makes it win-win situation for both of the sides.

BMW, Leipzig, Germany



The BMW Leipzig Plant is one of the most modern and sustainable car plants in the world. BMW cars for customers all over the world are produced here since 2005. More than 960 vehicles per day roll off the production lines.

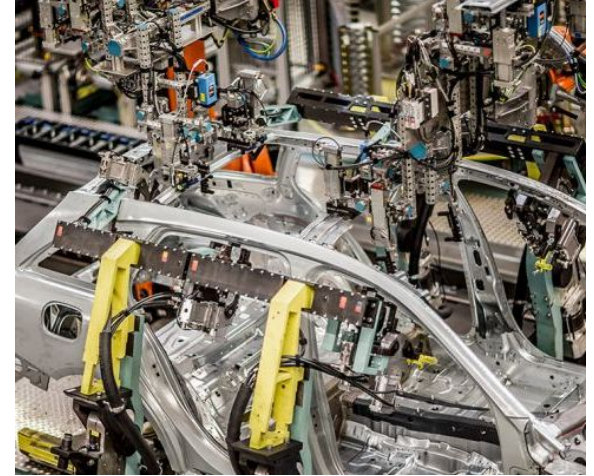


Up to 860 cars of the BMW 1 and 2 Series are manufactured in the classic production every day. In addition, two trendsetting vehicles with alternative drive systems and innovative light weight carbon bodies are produced.



Green energy for the production of these cars is provided by four purpose-built wind turbines on site.

Daimler, Bremen, Germany



Tradition meets future: Mercedes-Benz cars have been rolling off the assembly lines at the Bremen plant for the last 40 years. Starting off with the 5123 model, the plant has become a success story for northern Germany. With around 12,500 employees, the Mercedes-Benz Bremen plant is the largest private employer in the region.

Ten models are currently being produced at the location: the C-Class sedan, wagon, coupe, and convertible; the E-Class coupe and convertible; the GLC SUV; the GLC coupe; and the SLC and SL roadsters. The Bremen plant is the lead plant steering the worldwide production of the C-Class and the GLC.

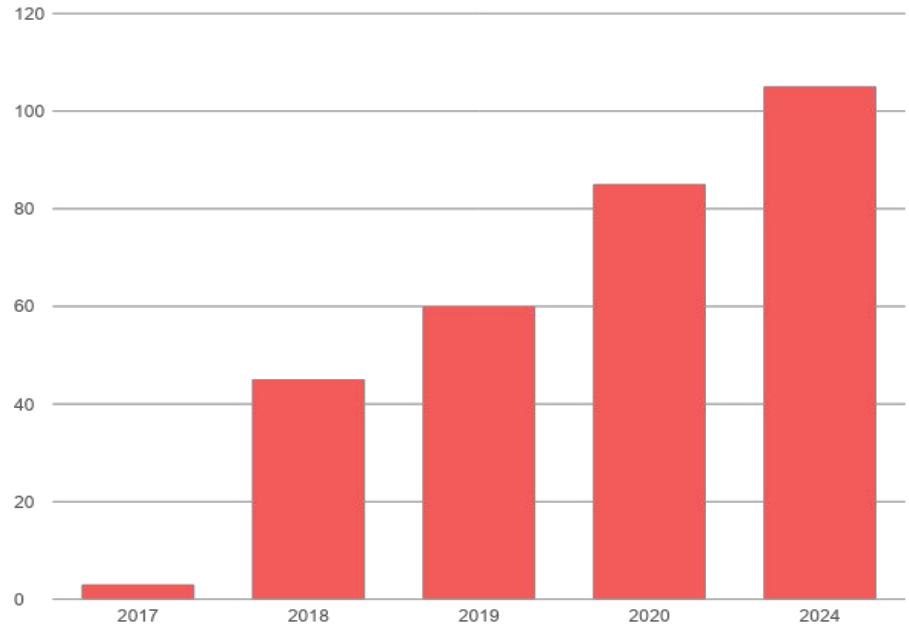
Building and production never stops and we have our people working 6 days a week to make sure everything is made to perfection.



Having expertise in vehicle
production industry, and
operating well beyond.

Accumulating The Best Talents

Our people in short terms have got management positions, such as line leaders and supervisors.



Our Long-term Goals

- * Company growth
- * To hire additional experienced professionals that can join our existing talent pool and continue the steady growth of the business
- * Getting into new work aspects such as steel construction and main construction
- * Maintain high level service and standards at all points
- * Get more professionals into the company

And

- * Keeping customer service at our best
- * Meet the workforce needs of industry by preparing workers with the skills employers need
- * Project growth around the world
- * Gain new partnerships
- * Maintain safety at 100% and zero accidents
- * Get our workers training in all areas
- * And Safety first

